

COUAC.....

Physical
Comedy



Physical Theater
Non Verbal
Voice Over
9 +
50'

Technical Contact :

COUAC Technical Director :

Filippo Cavinato

+32(0)497.40.49.49 / filippo.cavinato@gmail.com

TECHNICAL DATA SHEET - Information

This technical sheet is established for optimal conditions.

All technical negotiations remain possible.

Send us your technical room plan - PDF.

We come with an adaptation proposal (if necessary).

Frontal configuration for theater room

Duration of the show = 50 minutes

Distribution and technical team : 3 people (1 actor + 2 Technicians)

The standard room has 200 seats. (It may vary depending on the configuration of the room)

The control room must be installed at the back of the room or in a very open control room.

STAGE :

Italian-style hanging, black : 1 background + 2 planes

minimum 1.50m to the garden and to the courtyard.

Minimum required stage volume : O 7m / D 5m / H 4m

Opening : 6m (minimum 5m) / Wall to wall: 8m

Depth : 5m (minimum 4m + 1m65 minimum in front of the Tulle at the front of the stage.)

Height : 5m (minimum 4m)

Black floor / floor covered with a black dance mat.

Perfect blackout of the room and the stage cage is essential.

Make sure that none of your emergency blocks are pointing towards the stage or shining any light.

Lighting : 21 dimmer circuits

Sound system : 1 Amplification in 4 points adapted to the room.

Technical time : Installation 8 hours - 2 services (pointing, installation of Tulle & decor)

As part of the rotation with other shows: FESTIVAL

Setting up the decor : Installation: 30/40 minutes / Uninstallation: 20 minutes

COMPAGNIE DU PLAT PAYS ! ASBL

Artistic Production of Arts & Performing Arts

Head office : 203, Rue d'Onnezies - 7380 Baisieux - Belgium

www.cieduplatpays.be / info@cieduplatpays.be

Plat
PAYS!
Compagnie
production artistique



COUAC - TECHNICAL SHEET - Technical Home Information

PREPARATION : **Pre-assembly required. (unless otherwise agreed in advance)**

In order to best prepare for our arrival, it would be desirable for you to provide us with your plans (mass, section, room) in PDF format. Your technical sheet should be sent to us by email along with the contact details of the person who will be in charge of our reception. If your space seems too small, a few adjustments may perhaps make it more comfortable. possible reception.

SCHEDULE :

Allow for installation time and technical adjustment of at least 2 services of 4 hours.
(if the pre- installation lighting was carried out before the arrival of the company).

Average installation and setup time : 8 hours

Contact the company manager for more information.

Storage and dismantling time : 2 hours including loading.

IMPORTANT : The light installation (connection & patch) will be carried out before the arrival of the company.

STAFF : **(to be negotiated depending on the type of room)**

One day of assembly : minimum 3 location managers required.

- 1 general manager during our presence in the venue : decision-making.
- 1 technician (sondier, electrician and stagehand/bender) during the service (6:00) preceding the show : assembly of accessories, adjustment of lights, sound and conduct
- 1 technician at the end of the show for a service (1 hour): dismantling.

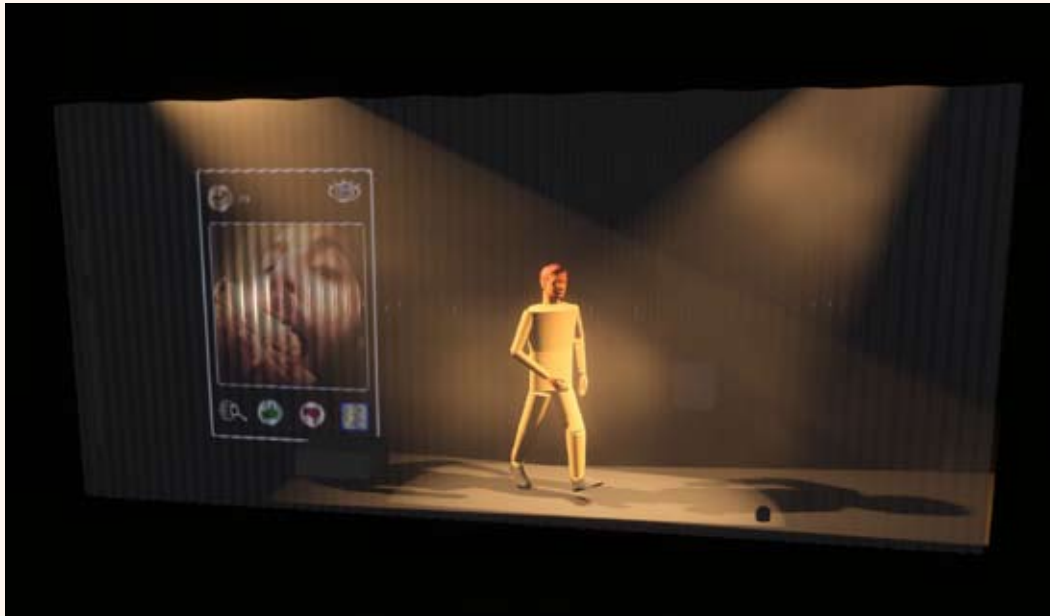
STAGE ARRANGEMENT :

Special feature of the show (suspended decor - Light Element + Gobelin Tulle)

Suspension on the first pole of a Tulle Gobelin - Height 4 m / Width 6 m.

Video projector installation on the floor before the stage - 1.65 m from Tulle Gobelin.





COUAC - TECHNICAL SHEET - Equipment + Control

MANAGEMENT :

The company's director is responsible for lighting and sound control.

Please place the lighting and sound control in the room in an ergonomic manner.

The show is run by a single stage manager.

SOUND : Diffusion adapted to the performance venue.

A façade adapted to the room, plus a return placed behind the stage.

- 1 amplification in 4 points adapted with diffusion on the distant façade.
- 1 backstage return
- Mixing table if digital console one person to carry out the patch and adjustments
- 2 mono return circuits - the cabling necessary for the connections.

LIGHTING : The lighting layout plan is a working basis

For a large room, we will make the best use of additional equipment.

A specific implementation plan can be produced, provided that you have sent us the plans of your location and the list of available equipment..

Equipment that the company provides :

- 1 Tulle Gobelin - (Dimension: 6m x 4m) / 1 Frieze - (Dimension: 1.40 mx 6 m)
- 2 Frame hangers - (Dimension: 1.40 mx 4 m)

A computer for sound and video broadcasting / A soon focusrite 4i4 card

One Optoma HD35UST video projector / Two HDMI/RJ45 extenders

RJ45 and HDMI cables

Lighting Control : A Chamsys MQ60 console

Smoke machine + fan / One RGBW LED Par / Two RGBW LED strip tanks A gantry /

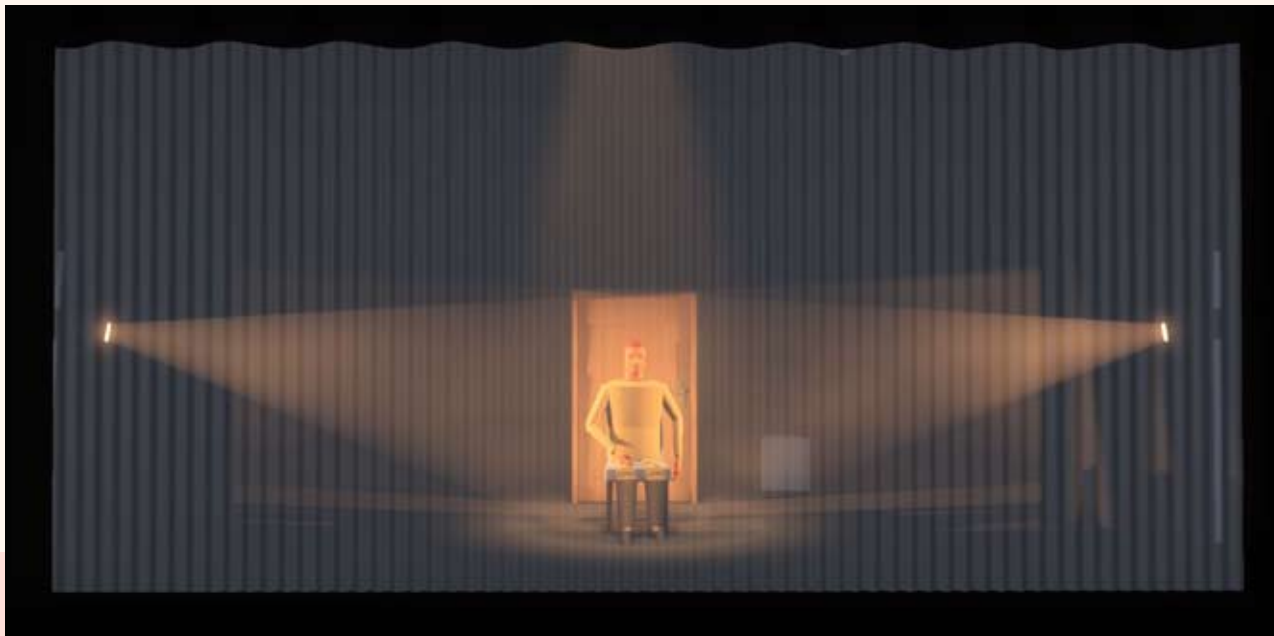
A DMX splitter + driver for Led control / DMX wiring

For information in case the room is not equipped :

The company has its own lighting fleet (Cutout) and black dance floor.

FYI : there are timecode sequences



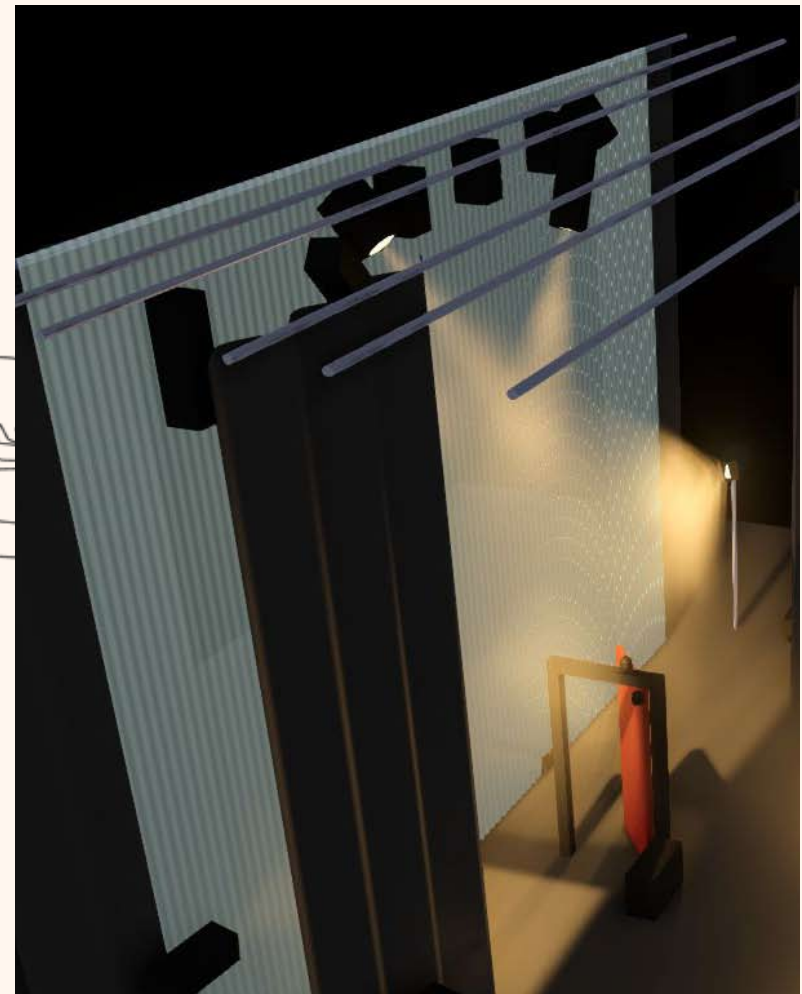
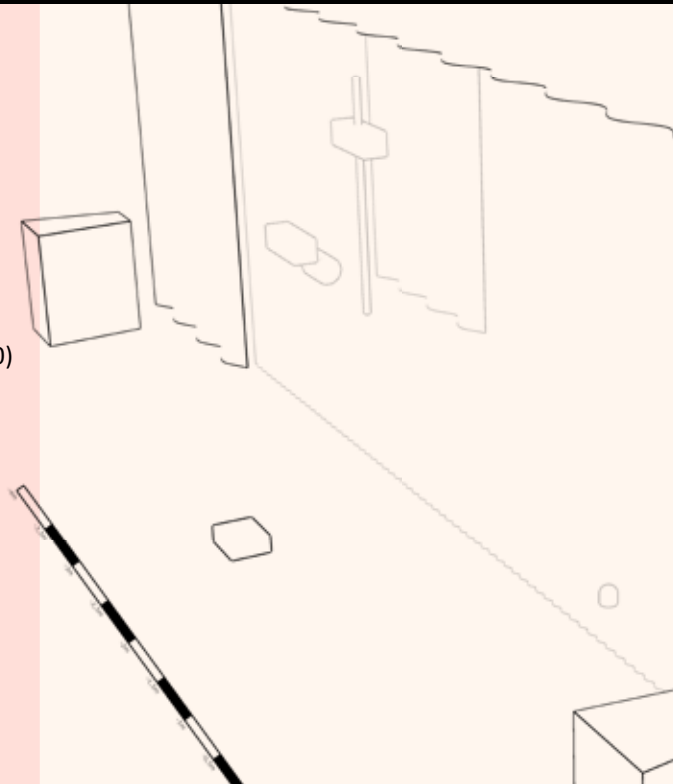


Scenic DEVICE - COUAC

Plateau / Configurations Italian style :

- Black Pendrillon (2 levels - minimum 1m50)
- Black background
- Black floor : laying a dance mat.
- Opening : 8m desired (minimum 6m)
- Playing surface : 5m opening
1m50 on each side
- Depth : 5m desired (minimum 4m)
- Height : minimum 4 m

Installation of a Tulle Gobelin on 1st pole.
The company brings Tulle : 6m x 4m



FESTIVAL TECHNIQUE - COUAC

HOW THE SHOW / FESTIVAL WORKS

For quick assembly and to facilitate the execution of the show rehearsal.

In rotation with other shows for set changes.

Once the pre-implantation, assembly, pointing and marking have been carried out.

Setting up the decor takes 30/40 min.

Uninstalling the decor takes 20 minutes maximum.

TECHNICAL INFO - COUAC - STAGE SET

STAGE ELEMENTS :

All elements that are on and around the stage..

On stage :

- 1 Video projector in front of the stage.
- 1 Tulle Gobelin - H 4m x L 6m
- 1 Tulle stage frame frieze - H 1.20m x L 6m
- 2 Stage frame hangers - H 4m x 1.40m
- 2 Commercial Lighting - Led Strip in box - DMX
- 1 House Light - Connection to Electrical Circuit

Around the scene :

- 1 Hoverboard + 1 small fan
- 1 trash can with waste + shopping paper bag.
- 1 Post on support - Bus stop.
- 1 Small Ambulance on wheels + towing system.
- 1 Security gate - Connection to DMX circuit.
- 1 House Door - on wheels.
- 1 Coat rack + Stool + LED garland

Our needs for technical staff on stage : Festival

* 4 people for the change of stage on the day of the performance.

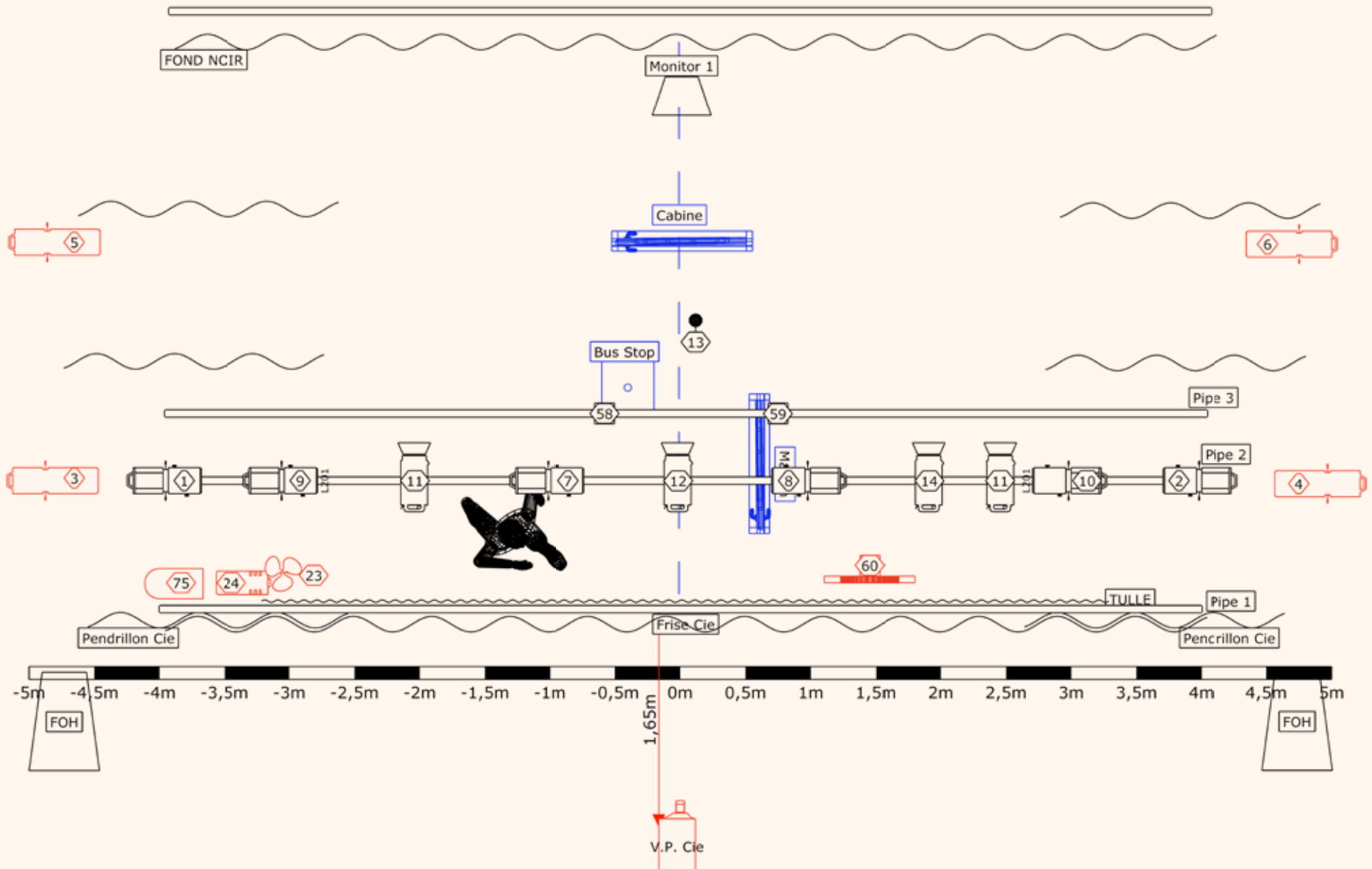
Support for installing Tulle Gobelin / SOUND - PATCH - VP verification



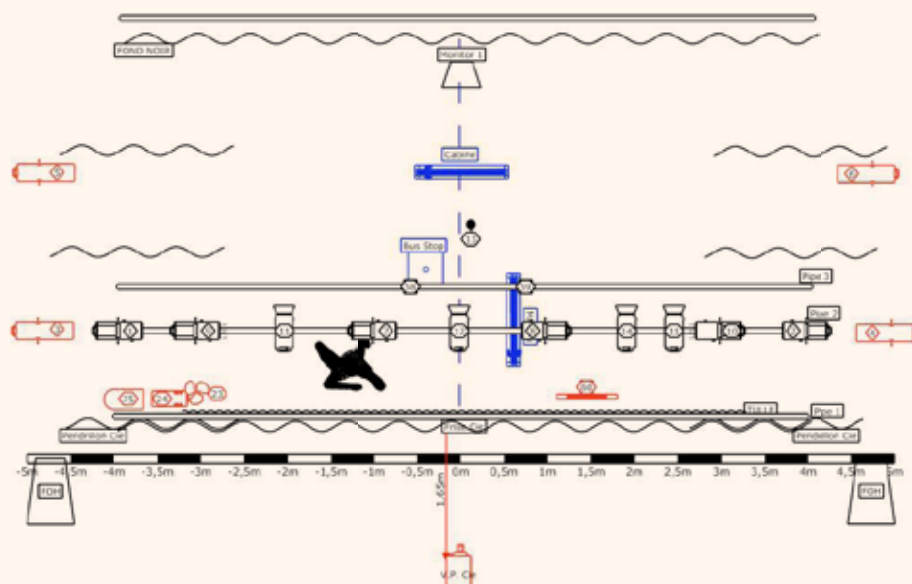
Layer key	Project	Project location	Project date	Drawing author	Drawing version
	COUAC	Creation in progress new number	24_12_30		Creation in progress
	Lighting designer				
	Technical director				
	Director				
Actor	Filippo Cavinato				
Cotation					
Curtaine Tulle					
Decor_Porte					
Default layer					
Floor	Filippo Cavinato +32 497 40 49 49				
LX Pipe					
Pipe	Sébastien Domogalla				

Symbol key

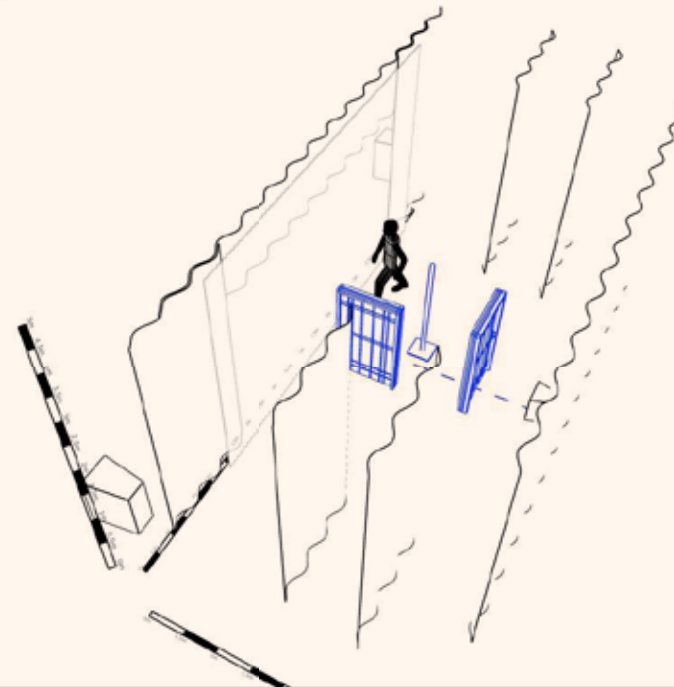
	613SX 23°-54° (6)		LED Strip RGBW 1m Cie (2)		HD35UST (1)
	614SX 15°-35° (4)		Par56 MKII RGBW Cie (1)		AF-40 DMX Fog Machine Cie (1)
	Lutin 306L LPC (4)		RGBW LED Strip 1m (1)		Fan Cie (1)



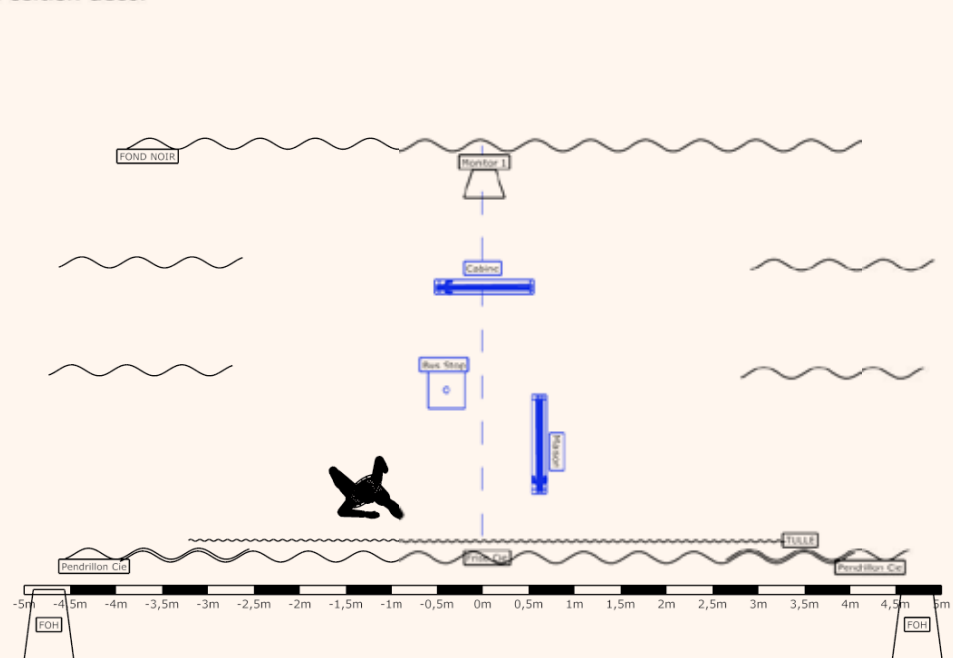
Plan Lumière



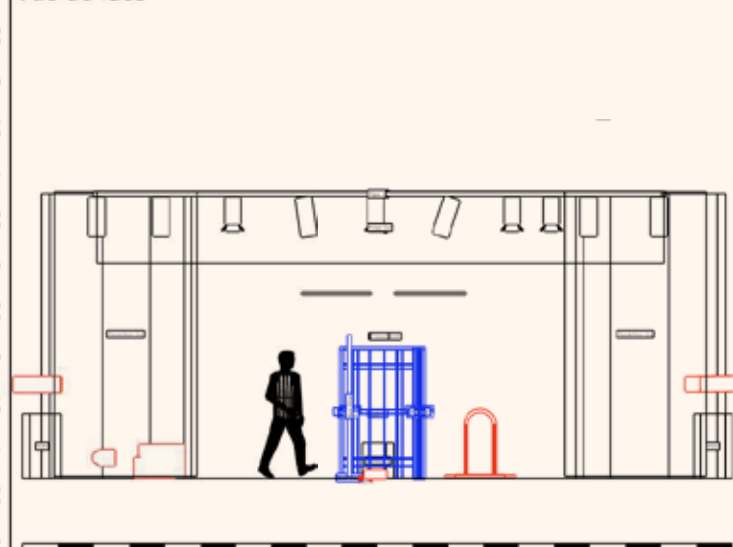
Perspective



Position décor



Vue de face



Project	COUAC
Project date	24_12_30
Drawing version	Creation in progress
Project location	Creation in progress neew number
Director	Sébastien Domogalla
Technical director	Filippo Cavinato +32 497 40 49 49
Lighting designer	Filippo Cavinato

Symbol key

- 613SX 28°-54° (6)
- 614SX 16°-35° (4)
- Lubin 306L LPC (4)
- LED Strip RGBW 1m Cie (2)
- Par56 MKII RGBW Cie (1)
- RGBW LED Strip 1m (1)
- HD35UST (1)
- AF-40 DMX Fog Machine Cie (1)
- Fan Cie (1)

Layer key

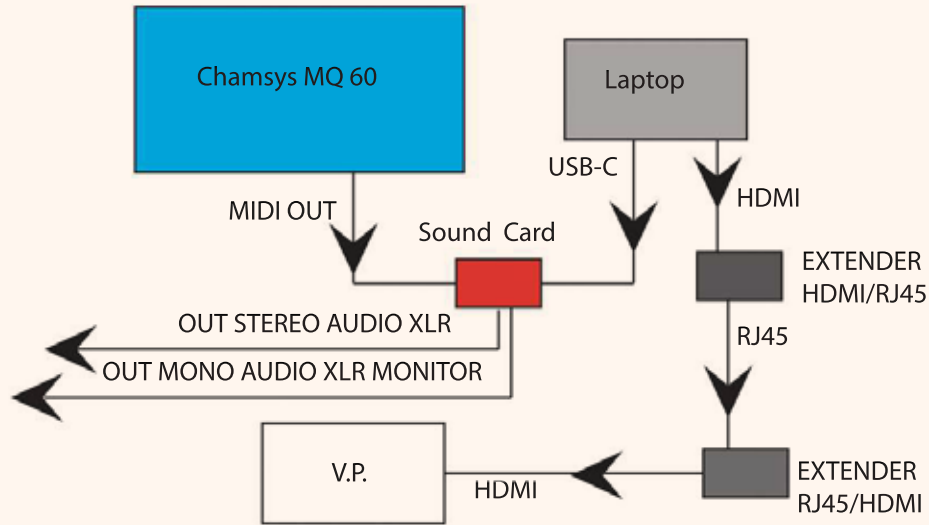
- Actor
- Cotation
- Curtaine Tulle
- Decor_Porte
- Default layer
- Floor
- LX Pipe



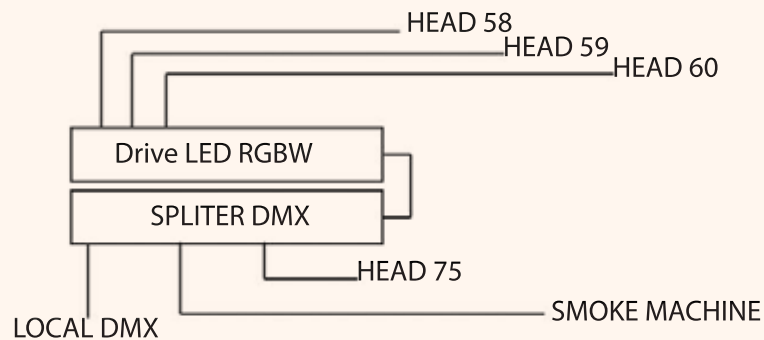
CONTROL DEVICE - COUAC

FYI : there are timecode sequences

➤ REGIE



➤ ON STAGE



COUAC Technical Director :

Filippo Cavinato

+32(0)497.40.49.49 / filippo.cavinato@gmail.com